



ULUSLARARASI ŞAMPIYONLAR TR YÖS DENEMESİ 3

ADAYIN/ BAŞVURU SAHİBİ

ADI/İSİM:

SOYADI/SURNAME:

ADAY NUMARASI / CANDIDATE NUMBER:

- 1.Bu testte 80 soru vardır.
- 2.Bu test için verilen cevaplama süresi 100 dakikadır.
- 3.Bu testlerdeki her sorunun bir tek doğru cevabı vardır. Bir soru için birden çok cevap yeri işaretlenmişse, o soru yanlış cevaplanmış sayılacaktır.
- 4.Cevaplarınızı koyu siyah ve yumuşak bir KURŞUN KALEMLE işaretleyiniz.İşaretlerinizi cevap kutucuğunun dışına taşırmayınız. Tükenmez veya dolma kalem kullanmayınız.
- 5.Bu testler puanlanırken, doğru cevaplarınız sayısından yanlış cevaplarınızın sayısının dörtte biri düşülecek ve kalan sayı ham puanınız olacaktır.
- 6.Cevap kâğıdınızı buruşturmayınız, katlamayınız ve üzerine gereksiz hiçbir işaret koymayınız. Değiştirmek istediğiniz bir cevabı, yumuşak bir silgiyle, temizce siliniz ve yeni cevabınızı işaretlemeyi unutmayınız.

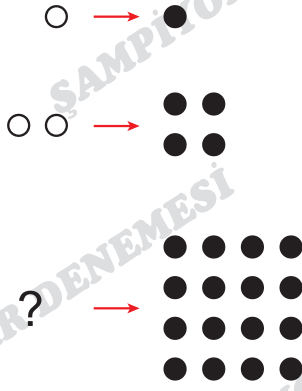
- 1.Bu test 80 sorudan oluşmaktadır.
- 2.Bu test için tanınan süre 100 dakikadır.
- 3.Bu testlerde her sorunun tek bir doğru cevabı vardır. Birden fazla alternatifi işaretlenmesi durumunda o cevap otomatik olarak yanlış sayılacaktır.
- 4.Cevap kağıdına işaretleme yapmak için yumuşak, SİYAH KALEM kullanmalısınız. Seçtiğiniz cevap için daireyi tamamen doldurunuz ancak işaretinizin daire sınırlarını aşmamasına dikkat ediniz. Başka türde kalem kullanmayın.
- 5.Sınavların puanlamasında her dört yanlış cevap için bir doğru cevap düşülecek, geri kalan ham puan olacaktır.
- 6.Cevap kağıdını düz tutun ve katlamayın. Üzerine gereksiz işaretler yapmayın. Bir yanıtı değiştirmek isterseniz, çok yumuşak bir silgiyle dikkatlice tamamen silin. Yeni cevabınızı işaretlemeyi unutmayın.

ŞAMPİYONLAR DENEMESİ

1. Bu testte Sayısal Yetenek alanına ait 40 adet örnek soru vardır.

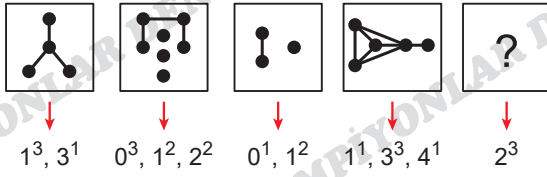
2. Sınav süresi 50 dakikadır.

1.



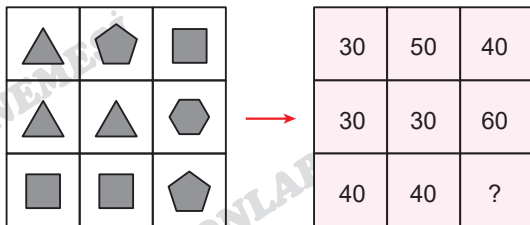
- A) ○○○○ B) ○○○○○ C) ○○○○○○
D) ○ E) ○○○○○○○○

2.



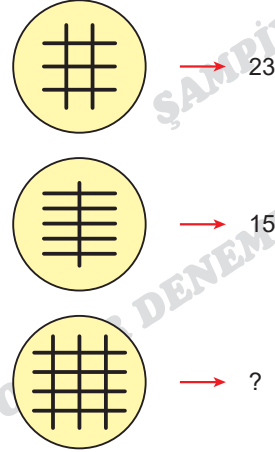
- A) B) C)
D) E)

3.



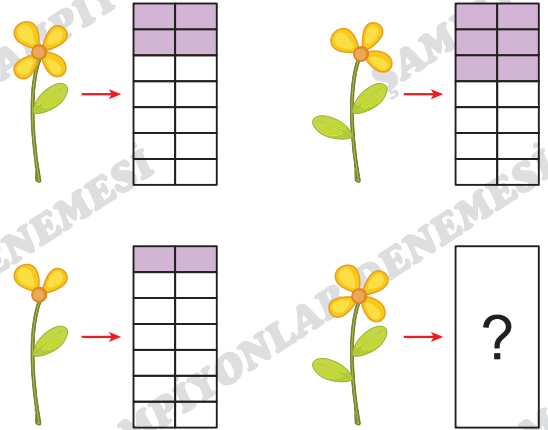
- A) 10 B) 20 C) 30 D) 40 E) 50

4.



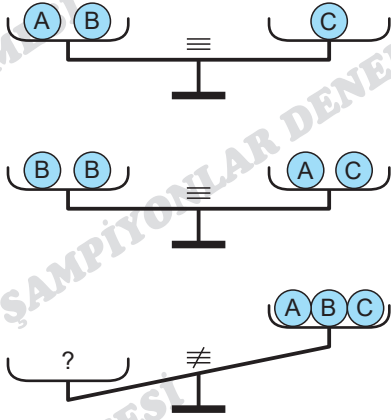
- A) 7 B) 23 C) 33 D) 34 E) 68

5.



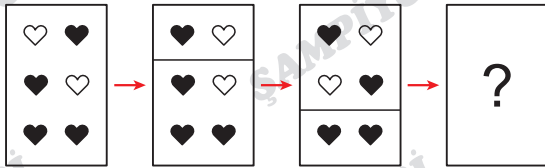
- A) B) C) D) E)

6.



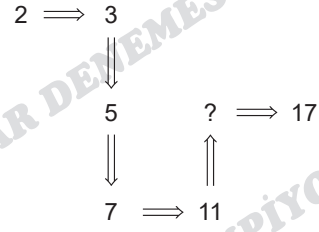
- A) (A, A, A) B) (A, B, B)
 C) (B, B, B) D) (C, C, A)
 E) (A, A, B)

7.



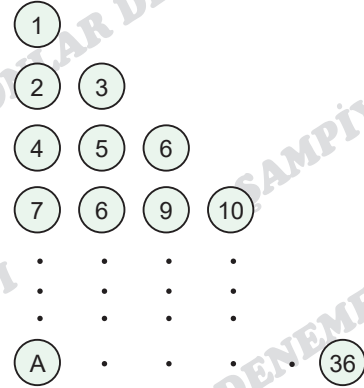
- A) B) C)
 D) E)

8.



- A) 12 B) 13 C) 15 D) 16 E) 18

9.



⇒ A = ?

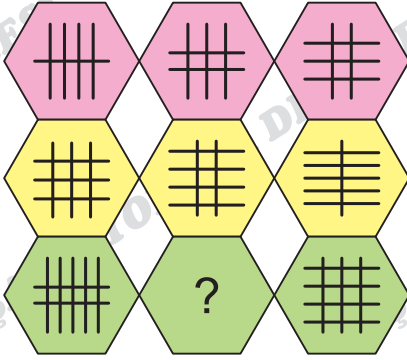
- A) 27 B) 28 C) 29 D) 30 E) 31

10.



- A) 7 B) 8 C) 9 D) 10 E) 15

11.



- A) B) C) D) E)

12.

+	y	ö	s	-	y	ö	s	$\sqrt{\quad}$	8	r
t		5		t		3		1	3	
r	8			r	16		k	t	$\sqrt{12}$	n

$$r - s = k$$

$$t - \text{ö} = 3$$

$$\Rightarrow n = ?$$

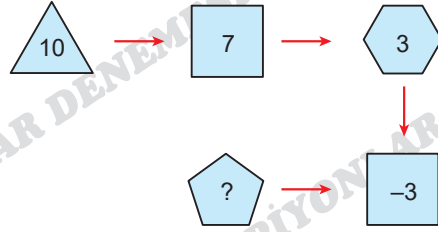
- A) 4 B) 5 C) 6 D) 8 E) 16

13.

MERCEDES	BELLINGHAM	AZERBAJCAN
PEUGEOT	FERNANDES	GÜRCİSTAN
TOYOTA	MUHİTTİN	PORTEKİZ
HONDA	HAALAND	TÜRKİYE
FORD	MBAPPE	SURİYE
BMW	PEDRİ	RUSYA
	?	İRAN

- A) İZZETTİN B) YAŞAR C) RÖVŞAN
D) BASEL E) UMUT

14.



- A) 0 B) 1 C) 2 D) 7 E) 8

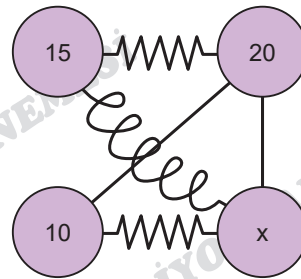
15.

9	3	6	3	6
16	A	7	4	9
25	5	8	6	B
144	12	9	8	1

$$\Rightarrow A - B = ?$$

- A) -2 B) 0 C) 2 D) 4 E) 6

16.



$$\text{Resistor} \rightarrow 5$$

$$\text{Wavy line} \rightarrow 3$$

$$\text{Wire} \rightarrow 2$$

$$\Rightarrow x = ?$$

- A) 10 B) 15 C) 20 D) 30 E) 72

ASLAN HOCA YÖS

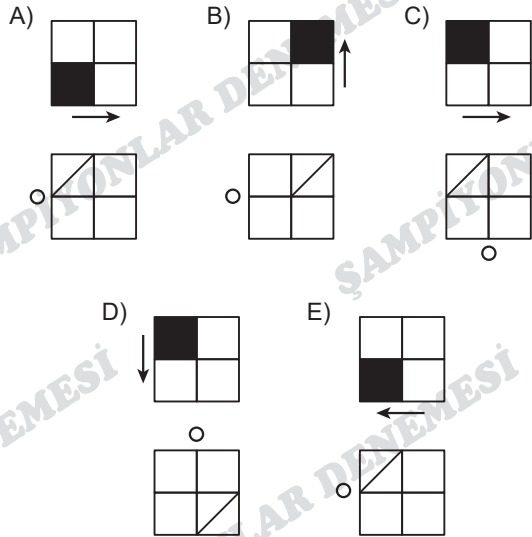
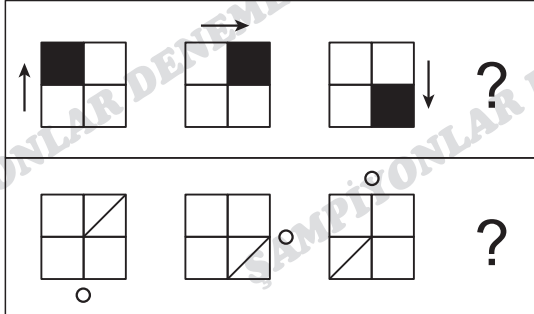
17.

GÜLŞEN	347958
SONGÜL	628347
ÖZGEN	10358
ŞENOL	95827

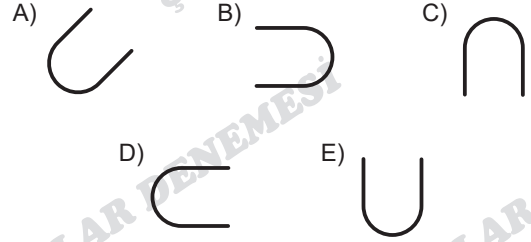
ERSİN	58	FIRAT	--
HÜLYA	--	HALİL	- 7
ONUR	2 -	EMRE	?

- A) 34 B) 55 C) 58 D) -4 E) -5

18.



19.



20.

$$a \star b = \begin{cases} a - b, & a > b \\ a^2 + b, & a \leq b \end{cases}$$

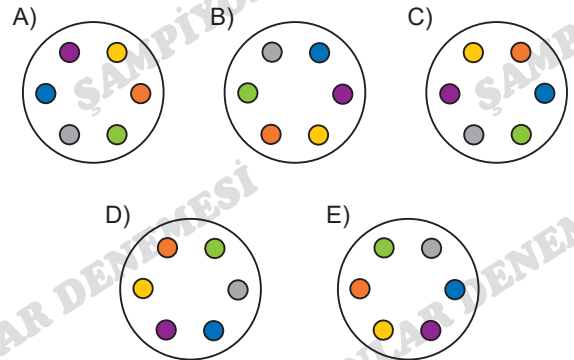
$$(1 \star 2) \star 2 = ?$$

- A) 4 B) 3 C) 2 D) 1 E) 0

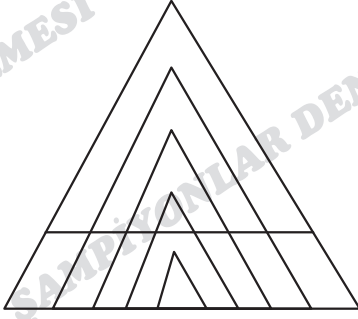
21. Aşağıdakilerden hangisi diğerlerinden farklıdır?

Which of the following is different from the others?

Что из перечисленного отличается от остальных?



22.



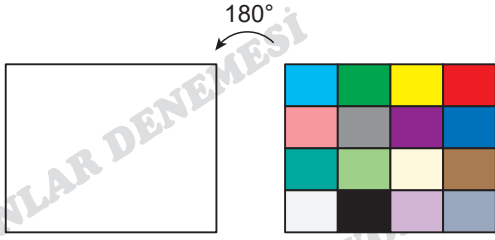
Şekilde kaç üçgen vardır?

How many triangles are there in the figure?

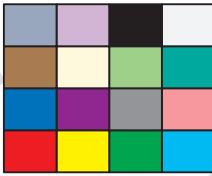
Сколько треугольников на рисунке?

- A) 8 B) 9 C) 10 D) 11 E) 12

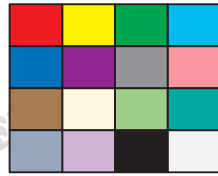
23.



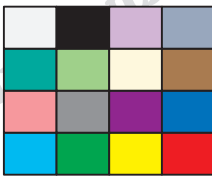
A)



B)



C)



D)



E)



24.

$$\text{Apple} + \text{Banana} = 13$$

$$\text{Cherry} - \text{Banana} = 12$$

$$\text{Apple} - \text{Cherry} = 5$$

$$\Rightarrow \text{Apple} = ?$$

- A) 15 B) 10 C) 9 D) 8 E) 5

25.

ŞAM = DE
PIYON = NE
LAR = ME
DENEME = Sİ

$$\Rightarrow \text{ŞAMPIYONLAR} = ?$$

- A) DE B) NE C) ME D) LA E) Sİ

26.

$$\text{Cross} + \text{Diamond} = ? + \text{Triangle}$$

A)



B)



C)



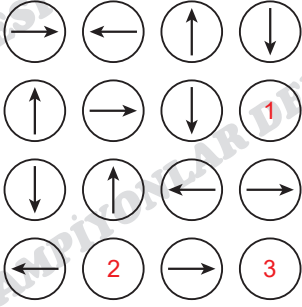
D)



E)



27.


 $\Rightarrow (1, 2, 3) = (?, ?, ?)$

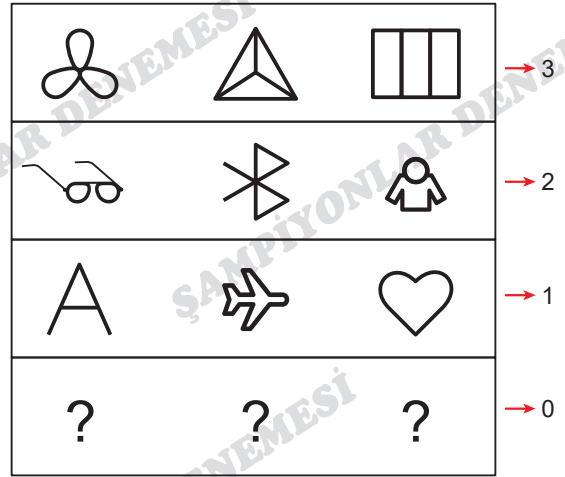
- A) $\leftarrow, \downarrow, \uparrow$ B) $\leftarrow, \downarrow, \rightarrow$
 C) $\uparrow, \rightarrow, \leftarrow$ D) $\downarrow, \rightarrow, \rightarrow$
 E) $\rightarrow, \rightarrow, \rightarrow$

28.

FB $\rightarrow 33 \cdot 22$ TR $\rightarrow 81 \cdot 73$ BJK $\rightarrow 22 \cdot 51 \cdot 52$
 $\Rightarrow GS = ?$

- A) $14 \cdot 74$ B) $41 \cdot 74$ C) $32 \cdot 23$
 D) $58 \cdot 34$ E) $34 \cdot 58$

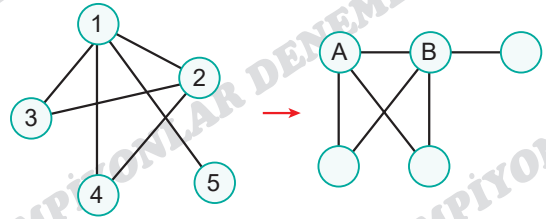
29.



- A) YÖS B) BİR C) MAT
 D) TEK E) GEO

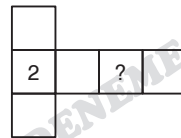
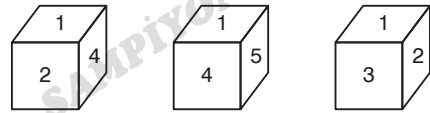
ASLAN HOCA YÖS

30.


 $\Rightarrow A \cdot B = ?$

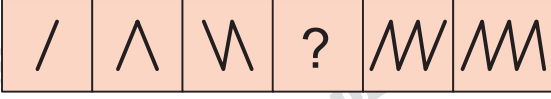
- A) 2 B) 3 C) 4 D) 6 E) 10

31.



- A) 1 B) 3 C) 4 D) 5 E) 6

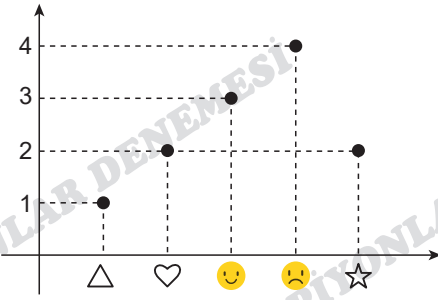
32.



- A) B) C)
 D) E)

33.

		?	



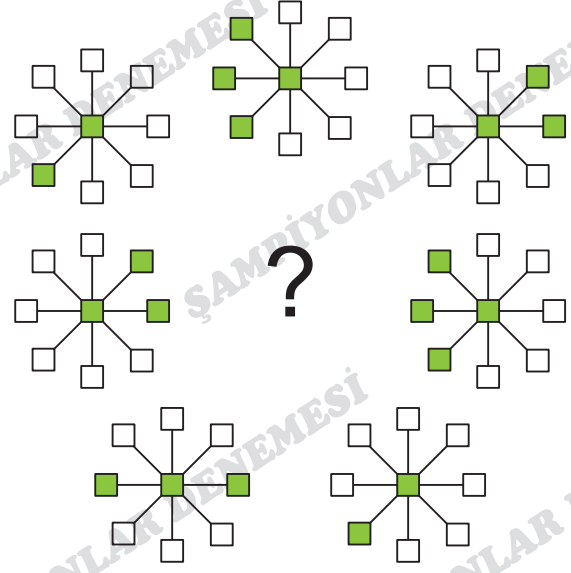
- A) B) C) D) E)

34.

1	2	3	4	5	6	7	8	9	10	...	1453
B	A	K	Ü	B	A	K	Ü	B	A	...	
U	R	M	İ	Y	E	U	R	M	İ	...	
B	O	L	U	B	O	L	U	B	O	...	?
T	E	B	Ü	K	T	E	B	Ü	K	...	

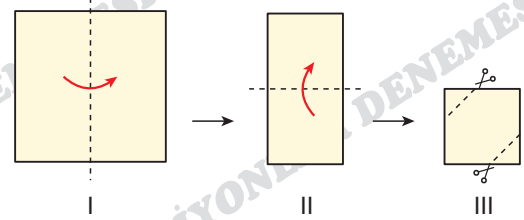
- A) K M L B
 B) B U B B
 C) B İ B B
 D) Ü R Ü K
 E) B İ L E

35.



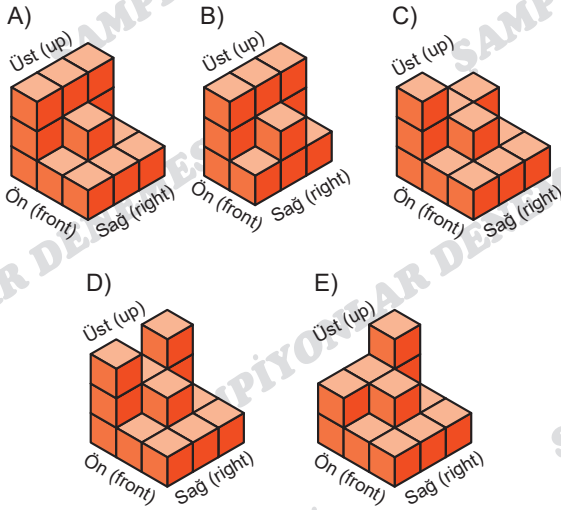
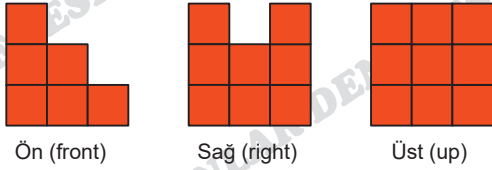
- A) B) C)
 D) E)

36.

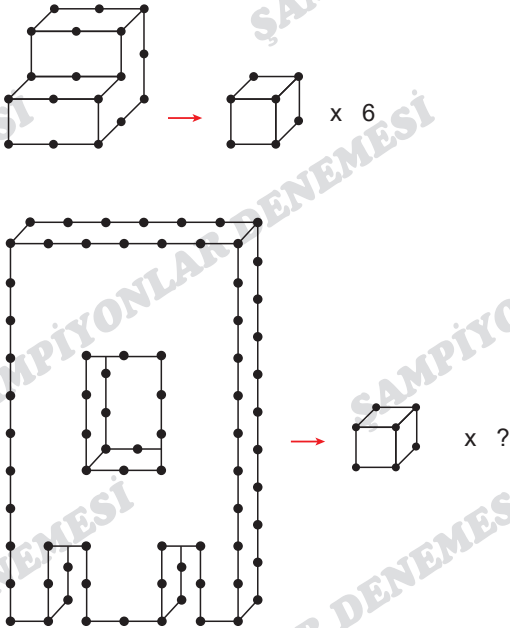


- A) B) C)
 D) E)

37.



38.

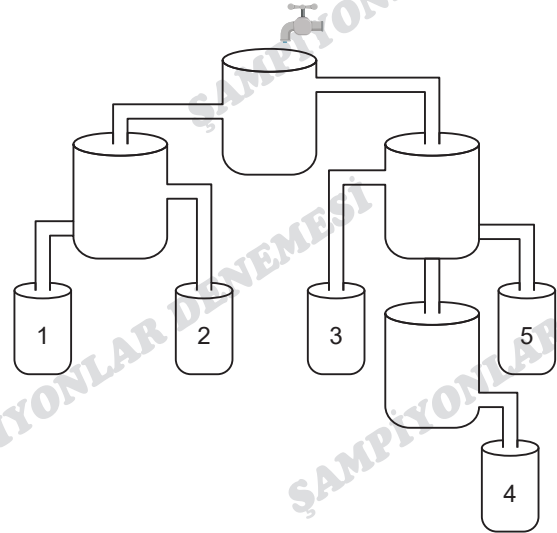


- A) 48 B) 50 C) 52 D) 54 E) 56

39. Aşağıdaki kovalardan hangisi en başta dolar?

Which of the following buckets gets fully filled at first?

Какое из следующих ведер наполнится первым?

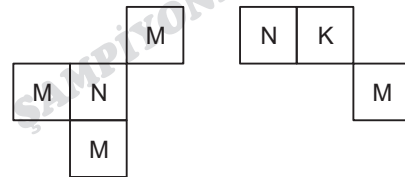


- A) 1 B) 2 C) 3 D) 4 E) 5

40.

1	5	6	4	8	1	6
4	2	6	1	8	6	8
6	4	1	5	6	1	5
5	4	8	4	8	2	1
3	5	6	2	5	3	2
5	6	5	2	5	8	6
8	2	1	5	8	1	4

I. II.



Her harf farklı bir rakamı göstermektedir. I ve II yukarıdaki tablonun farklı birer parçasıdır.

Each letter stands for a different number. I and II are different parts of the table.

$$\Rightarrow M + N + K = ?$$

- A) 10 B) 11 C) 12 D) 13 E) 14

1. Bu testte Temel Matematik alanına ait 40 adet örnek soru vardır.

2. Sınav süresi 50 dakikadır.

1. $x = -0,3$

$y = -0,4$

$z = -0,5$

$\Rightarrow ? < ? < ?$

A) $y > z > x$

B) $y > x > z$

C) $x > y > z$

D) $x > z > y$

E) $z > y > x$

2. $x \in \mathbb{R}$

$|x + 4| = x + 4$

$|2x - 3| = 3 - 2x$

$\Rightarrow \min(x) \cdot \max(x) = ?$

A) -6

B) -4

C) 0

D) 4

E) 6

3. $n \in \mathbb{N}$

$(n + 1) \cdot n \cdot (n - 1)! = \frac{42 \cdot 5!}{n + 2}$

$\Rightarrow n! = ?$

A) 5

B) 7

C) 9

D) 120

E) 720

4.

$$\begin{array}{|c|c|c|} \hline \text{ABCD} & \text{B} & 3 \\ \hline \end{array} \rightarrow \begin{array}{|c|c|} \hline \text{ABCD} & \text{B} \\ \hline \end{array} \begin{array}{r} - \\ \hline 3 \end{array}$$

$$\begin{array}{|c|c|c|} \hline \text{KLMN} & 5 & 2 \\ \hline \end{array} \rightarrow \begin{array}{|c|c|} \hline \text{KLMN} & 5 \\ \hline \end{array} \begin{array}{r} - \\ \hline 2 \end{array}$$

$\Rightarrow \begin{array}{|c|c|c|} \hline 823A & 9 & 0 \\ \hline \end{array} \rightarrow A = ?$

A) 5

B) 8

C) 9

D) 10

E) 13

ASLAN HOCA YÖS

5.

$\frac{1}{2} \square \frac{1}{3} = \frac{5}{6}$

$\frac{6}{7} \star \frac{2}{7} = 3$

$4 \triangle \frac{1}{2} = \frac{7}{2}$

$\Rightarrow (\square, \triangle, \star) = (?, ?, ?)$

A) +, x, ÷

B) +, x, -

C) +, -, ÷

D) +, ÷, -

E) -, +, ÷

6. $\frac{\sqrt{12} \cdot \sqrt{18}}{\sqrt{6} + \sqrt{6}} = m$

$(\sqrt{5} - \sqrt{3}) \cdot (\sqrt{5} + \sqrt{3}) = n$

$\Rightarrow m \cdot n = ?$

- A) 12 B) 6 C) 2 D) $\frac{3}{4}$ E) $\frac{4}{3}$

7. $\frac{a^{3x} - 1}{a^x - 1} : \frac{1 + a^x + a^{2x}}{a^x} = ?$

- A) a^x B) $a^x - 1$ C) $a^x + 1$
D) $\frac{a}{a^x}$ E) 1

8. $a \neq 2$

$x = 1 + \frac{2}{a}$

$y = 1 - \frac{2 - a}{2 - \frac{a^2}{2}}$

$\Rightarrow x = ?$

- A) $\frac{1}{y}$ B) $\frac{2}{y}$ C) $\frac{1}{1+y}$ D) y E) $2y$

9. $(x - 3) \cdot f(x^2 - 2) + f(x - 1) = x^3 - 3x^2 + x + 1$

$\Rightarrow f^{-1}(4) = ?$

- A) -2 B) -1 C) 0 D) 2 E) 4

10. $A, B \subset U$

$n(A) + n(A') = 10$

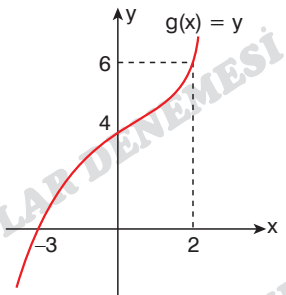
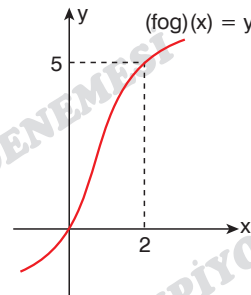
$n(B) = 3$

$\Rightarrow n(B') = ?$

- A) 2 B) 4 C) 7 D) 8 E) 9

ASLAN HOCA YÖS

11.



$\Rightarrow \frac{f(4) + g(-3)}{f(6)} = ?$

- A) 6 B) 5 C) 4 D) 2 E) 0

12. $8^{2x-2} \cdot (25)^{3x-3} = 10^6$

$\Rightarrow x = ?$

- A) 1 B) 2 C) 3 D) 4 E) 5

13. $A = 2025 \cdot 2001$

$B = 2000 \cdot 2026$

$\Rightarrow \sqrt{A-B} = ?$

- A) 1 B) 4 C) 5 D) 16 E) 25

14. $\sqrt{x+5} - \sqrt{x} = 10$

$\Rightarrow \sqrt{x+5} + \sqrt{x} = ?$

- A) 0,2 B) 0,3 C) 0,4 D) 0,5 E) 0,6

15. $|x-3| + 3 \leq 2$

$\Rightarrow \text{S.S.} = ?$

- A)
- \emptyset
- B) {1} C) {3} D) [1, 2] E) R

16. $\frac{x^2 - ax - 6}{x^2 - 5x + 6} = \frac{x + 2}{x - 2}$

$\Rightarrow a = ?$

- A) -2 B) -1 C) 0 D) 1 E) 2

17. $2^{0,7} = x$

$2^{0,3} = y$

$3^{4,7} = m$

$3^{2,7} = n$

$\Rightarrow x \cdot y + \frac{m}{n} = ?$

- A) 8 B) 10 C) 11 D) 12 E) 14

18. $(f + g)(x) = 3x + 1$

$(f - g)(x) = 4x - 5$

$\Rightarrow f(3) \cdot g(3) = ?$

- A)
- $\frac{4}{51}$
- B) 1 C)
- $\frac{3}{7}$
- D)
- $\frac{7}{3}$
- E)
- $\frac{51}{4}$

19.
$$\frac{x}{4} \Big| 7 \quad \frac{y}{3} \Big| 7 \quad \frac{x \cdot y}{z} \Big| 7$$

$\Rightarrow z = ?$

- A) 2 B) 3 C) 4 D) 5 E) 6

20. $x, y \in \mathbb{N}$

$$\frac{1}{x+y} + \frac{1}{2x-2} = 1$$

$\Rightarrow x \cdot y = ?$

- A) 6 B) 4 C) 2 D) 0 E) -1

21. $x \in \mathbb{Z}$

$4x - 3 < 5x - 3 < 4x + 7$

$\Rightarrow \sum x = ?$

- A) 58 B) 45 C) 36 D) 30 E) 28

22.
$$\begin{array}{r} ABC \\ 32 \\ \times \\ \hline \dots \\ 450 \\ + \\ \hline DEFK \end{array}$$

$\Rightarrow D + E + F + K = ?$

- A) 12 B) 13 C) 14 D) 15 E) 16

23. $x, y \in \mathbb{N}$

$$\begin{array}{|c|c|} \hline a & b \\ \hline \end{array} = a - b$$

$$\begin{array}{|c|c|} \hline a & \\ \hline b & \\ \hline \end{array} = a \cdot b$$

$$\begin{array}{|c|c|} \hline x^2 & y^2 \\ \hline \end{array} = \begin{array}{|c|c|} \hline 23 & \\ \hline 1 & \\ \hline \end{array}$$

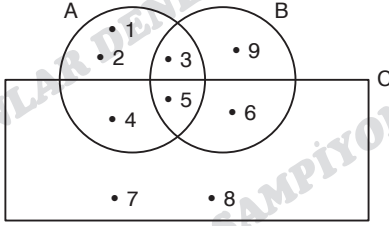
$$\begin{array}{|c|c|} \hline x & \\ \hline y & \\ \hline \end{array} = ?$$

- A) 12 B) 60 C) 132 D) 160 E) 230

24. $\frac{m}{n} = \frac{3}{4}$
 $\frac{n}{k} = \frac{4}{5}$
 $\Rightarrow \frac{n+k}{m} = ?$

- A) $\frac{1}{3}$ B) $\frac{1}{2}$ C) 1 D) 2 E) 3

25.



$\Rightarrow (A \cap B) - C = ?$

- A) \emptyset B) {5, 7, 8} C) {1, 2}
D) {1, 2, 4} E) {3, 5, 9}

26. $A \subset B \subset C$

$n(A) = 4$
 $n(C - B) = 3$
 $n(B - A) = 7$

$\Rightarrow n(C) = ?$

- A) 13 B) 14 C) 15 D) 16 E) 17

27. $(x - 1) \cdot P(x) = x^2 + ax - 3$

$$\begin{array}{r} P(x-2) \mid x-3 \\ \hline \end{array}$$

$\Rightarrow k = ?$

- A) -1 B) 1 C) 2 D) 3 E) 4

28. $x^2 - 3x - 5 = 0$

S.S. = $\{x_1, x_2\}$

$\Rightarrow \frac{x_1^2 - 3x_1}{x_1 \cdot x_2} = ?$

- A) -1 B) 1 C) 2 D) 3 E) 5

29. $x \in \mathbb{Z}$

$$2^{3-x} \leq 1 \leq 7^{16-2x}$$

$$\Rightarrow \sum x = ?$$

- A) 24 B) 28 C) 32 D) 33 E) 35

30.

$$P(x) = ax^3 + bx^2 + cx + d$$

$$a, b, c, d \in \mathbb{Z}$$

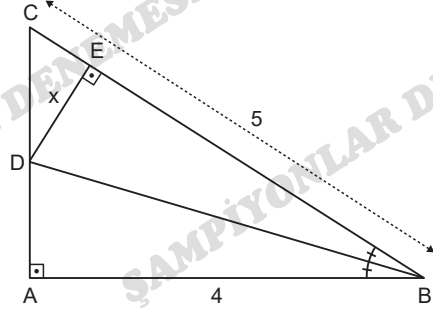
$$P(11) = 123$$

$$P(k) = 6$$

$$\Rightarrow \max(k) = ?$$

- A) 132 B) 128 C) 125 D) 11 E) 7

31.



ABC üçgen (ABC triangle / Треугольник)

$$m(\widehat{ABD}) = m(\widehat{DBC}), \quad CA \perp AB, \quad DE \perp BC$$

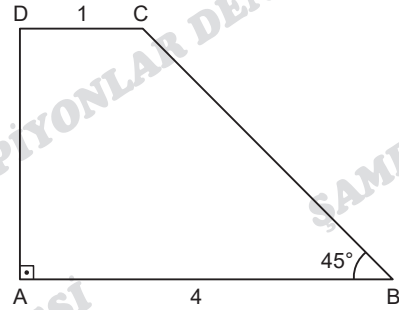
$$|AB| = 4 \text{ cm}, \quad |BC| = 5 \text{ cm}$$

$$\Rightarrow |DE| = x = ?$$

- A) $\frac{3}{2}$ B) $\frac{4}{3}$ C) $\frac{5}{4}$ D) $\frac{6}{5}$ E) $\frac{7}{6}$

ASLAN HOCA YÖS

32.



ABCD bir dik yamuk (ABCD is a right trapezoid / Прямоугольная трапеция)

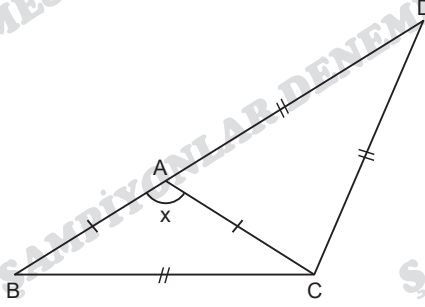
$$AB \parallel DC, \quad DA \perp AB, \quad m(\widehat{ABC}) = 45^\circ$$

$$|DC| = 1 \text{ cm}, \quad |AB| = 4 \text{ cm}$$

$$\Rightarrow A(ABCD) = ?$$

- A) $\frac{13}{2}$ B) $\frac{15}{2}$ C) $\frac{17}{2}$ D) 6 E) 7

33.



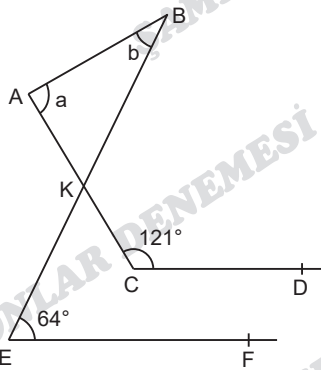
DBC bir üçgen (DBC triangle / Треугольник)

$$|AB| = |AC|, \quad |DA| = |DC| = |BC|$$

$$\Rightarrow m(\widehat{BAC}) = x = ?$$

- A) 94 B) 100 C) 108 D) 112 E) 135

34.



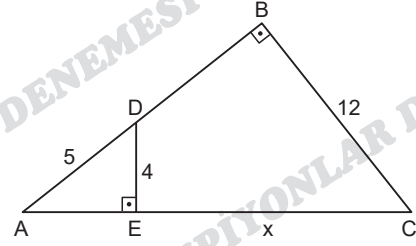
$$CD \parallel EF, \quad m(\widehat{ACD}) = 121^\circ, \quad m(\widehat{BEF}) = 64^\circ$$

$$m(\widehat{BAK}) = a, \quad m(\widehat{ABK}) = b$$

$$\Rightarrow a + b = ?$$

- A) 123 B) 124 C) 125
D) 127 E) 128

35.



$$m(\widehat{AED}) = m(\widehat{ABC}) = 90^\circ$$

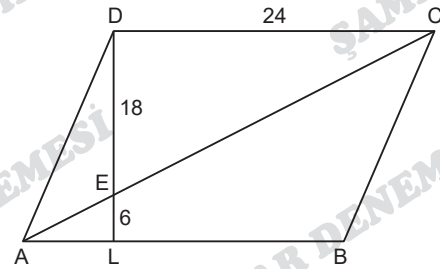
$$|AD| = 5 \text{ cm}, \quad |BC| = 12 \text{ cm}, \quad |DE| = 4 \text{ cm}$$

$$\Rightarrow |EC| = x = ?$$

- A) 12 B) 13 C) 15 D) 18 E) 19

ASLAN HOCA YÖS

36.



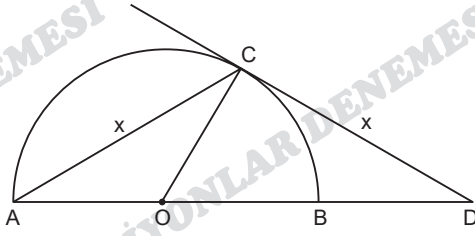
$$[AD] \parallel [BC], \quad [DC] \parallel [AB]$$

$$|DC| = 24 \text{ cm}, \quad |DE| = 18 \text{ cm}, \quad |EL| = 6 \text{ cm}$$

$$\Rightarrow |LB| = ?$$

- A) 24 B) 22 C) 20 D) 16 E) 12

37.



O çemberin merkezi (Point O is the center of the circle /
Точка O — центр круга.)

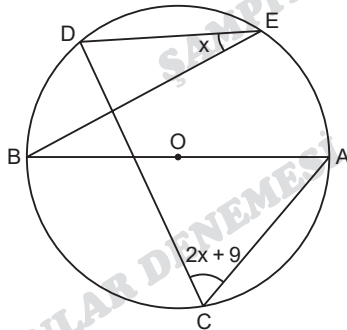
$$|AO| = |OB| = |OC| = 2$$

$$|AC| = |CD| = x$$

$$\Rightarrow x = ?$$

- A) 2 B) $2\sqrt{2}$ C) 3 D) $2\sqrt{3}$ E) 4

38.



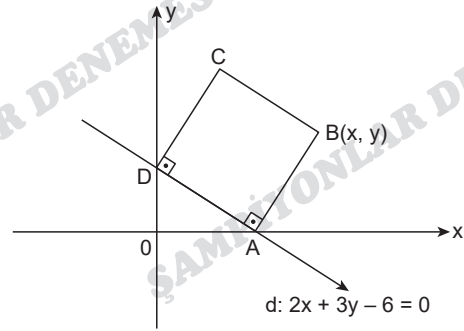
O çemberin merkezi (Point O is the center of the circle /
Точка O — центр круга.)

$$m(\widehat{ACD}) = 2x + 9$$

$$\Rightarrow m(\widehat{BED}) = x = ?$$

- A) 21 B) 27 C) 33 D) 48 E) 54

39.



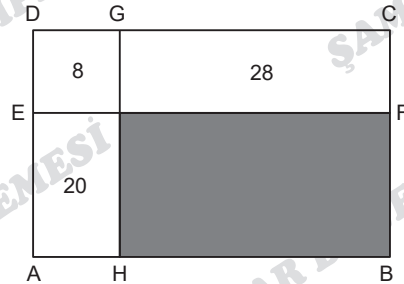
ABCD bir kare (ABCD is a square / Квадрат)

$$\Rightarrow x + y = ?$$

- A) 6 B) 7 C) 8 D) 9 E) 10

ASLAN HOCA YÖS

40.



ABCD dikdörtgen (ABCD rectangle / прямоугольник)

EFBA dikdörtgen (EFBA rectangle / прямоугольник)

Boyalı bölgenin alanı kaç birimkaredir?

How many square units is the area of the
painted region?

Сколько квадратных единиц составляет
площадь закрашенной области?

- A) 60 B) 64 C) 66 D) 68 E) 70

ŞAMPİYONLAR DENEMESİ



Bugün  **aslanhocayös** youtube Kanalında Canlı Yayın
Saat 19.30 TR YÖS SON TAKTİKLER SEMİNERİ
Saat 20.15 ŞAMPİYONLAR DENEMESİ ÇÖZÜMLERİ

YAYINLARIMIZ PUBLICATIONS

